

VANLÉUR

HOW
STRANGERS
BECOME
FRIENDS

ONE WORLD DISCOVERY NO 31

7 DAYS IN BERLIN
DAY ONE



**THE ARRIVAL
GRAND HYATT**



JENS FISCHER RODRIAN



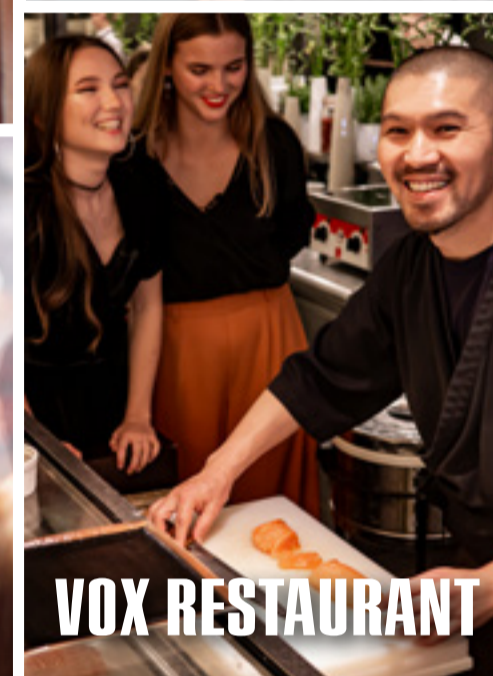
BLUE MAN GROUP



**PANORAMA
PUNKT**



NADIM HELOW



VOX RESTAURANT



VOX BAR



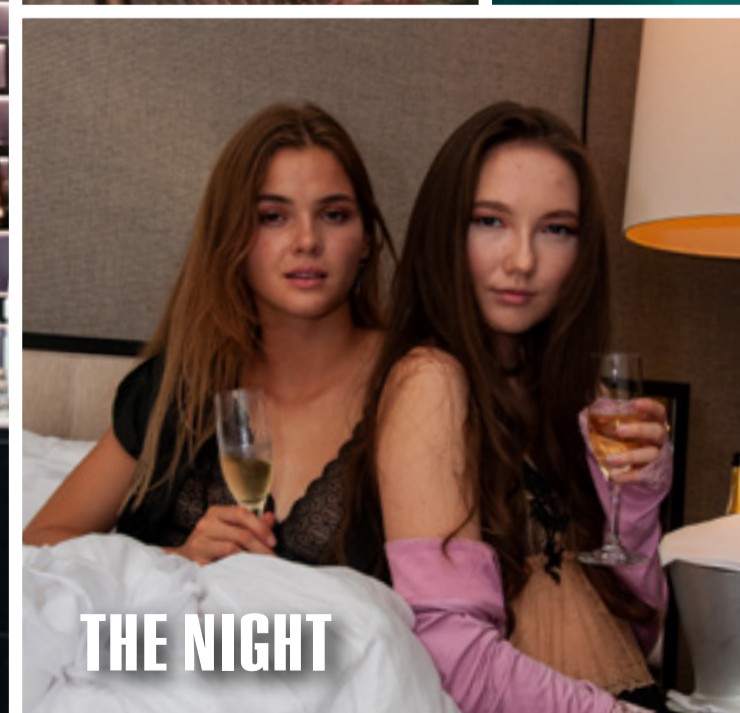
POTSDAMER PLATZ



BEHIND THE SCENES



CLUB OLYMPUS SPA



THE NIGHT

DAY 1 HOW STRANGERS BECOME BEST FRIENDS

14 | 1ST STOP: GRAND HYATT

- 16 THE CHECK IN · EMILIE & BELINDA ARRIVE TO THE HOTEL
- 18 THE HOTEL · EMILIE & BELINDA ENJOY THE COMFORT

24 | 2ND STOP: PANORAMAPUNKT

- 24 THE AREA · THE V-GUIDES DISCOVER THE LOCATION
- 34 THE BRIDGE OF SPIES · PORTRAIT OF POTSDAM
- 36 THE POTSDAMER PLATZ · A BRIEF HISTORY
- 38 THE FIRST TRAFFIC LIGHT
- 40 THE WAR, IRON CURTAIN & REUNIFICATION
- 44 THE TRESOR · BERLIN'S ICONIC TECHNO CLUB
- 50 THE SUPERSTARS · DAVID BOWIE, DEPECHE MODE, U2...

62 | FRIDAYS FOR FUTURE

- 62 BERLIN IMPRESSIONS · OF THE DEMONSTRATIONS 2019

68 | 3RD STOP: BLUE MAN INTERVIEW

- 70 NADIME HELOW · BLUE MAN GROUP MEMBER
- 74 JENS FISCHER RODRIAN · ART DIRECTOR

82 | 4TH STOP: BEHIND THE SCENES

90 | 5TH STOP: BLUE MAN GROUP SHOW

98 | 6TH STOP: VOX RESTAURANT

120 | 7TH STOP: VOX BAR

134 | 8TH STOP: OLYMPUS SPA

146 | THE FINAL NIGHTCAP

MASTHEAD

PUBLISHER · VALEUR MEDIA NETWORKS | **EDITOR IN CHIEF & ART DIRECTOR** · MARCO KOKKOT
COVER · ©MARCO KOKKOT, VALEUR MEDIA, ALL RIGHTS RESERVED
V-GUIDES · EMILIE PESCH, BELINDA RUFA, KATHARINA WOLFER, LUCIA RAZZA, SOLUNA KOKOL, OLIVIA JORDA, AMELIA YOUNG, YANA MIRADSHI, JIL GREIMANN, BELLA NEULIST,
EDITORIAL OFFICE · EMILIE PESCH, BELINDA RUFA, SOLUNA KOKOL, LUCIA RAZZA, TABEA SPEER
ADDRESS · VALEUR MEDIA NETWORKS · PRINZ-EUGEN-STRASSE 17 · 13347 BERLIN · GERMANY
CONTACT · EO@VALEURMAGAZINE.COM © VALEUR MEDIA 2020

EDITORIAL

ONCE UPON A TIME IN BERLIN

NO, THIS IS NOT A FAIRYTALE BOOK. IT'S STILL A MAGAZINE, BASED ON REALITY. ALTHOUGH IN SOME WAYS THE DIFFERENCES BETWEEN A FAIRYTALE AND A VALEUR REPORT AREN'T THAT BIG, BECAUSE EXCITING STORIES AND INTERESTING PEOPLE ALSO PLAY A MAJOR ROLE FOR US.

AROUND THE WORLD, WE CAN COME ACROSS EXCITING, FASCINATING, FRIGHTENING, SAD, FUNNY AND AUTHENTIC STORIES. STORIES TOLD BY PEOPLE, WHO KNOW THE VALUES OF THEIR HOME PLACE BETTER THAN ANYBODY ELSE AND WHO GIVE US A BETTER UNDERSTANDING OF THE ONE WORLD WE ALL SHARE.

IT IS ALWAYS WORTH LEARNING MORE ABOUT PEOPLE, THEIR HISTORY AND TRADITIONS, ART, CULTURE, PASSIONS - THEIR LIFE AND THEIR VALUES.

IN THE DAILY NEWS, CONFLICTS AND BAD NEWS ARE ALWAYS DOMINATING. HOWEVER, WE ARE SURE THAT WE ARE ALL MORE UNITED THAN WE ARE DIVIDED. THAT'S WHY WE, THE **VALEUR GUIDES,** HAVE JOINED FORCES TO MEET IMPRESSIVE PERSONALITIES AROUND THE WORLD.



EDITOR IN CHIEF, MARCO KOKKOT



BELLA & AMY AT THE WALL



LUCIA, SOLUNA & KATHERINA AT THE ZOO

THEREFORE, YOU ARE INVITED TO JOIN THE **ONE WORLD DISCOVERY,** WHICH LEADS US EVERY MONTH FOR **7 DAYS** EACH TO A SPECIAL PLACE AROUND THE GLOBE.

LET'S START IN A CITY, THAT IS THE SYMBOL OF DIVERSITY, UNITY AND FREEDOM: **BERLIN.**

JUST LIKE US, COMING FROM DIFFERENT CITIES AND COUNTIES, LOTS OF PEOPLE FROM ALL AROUND THE WORLD ARE DRAWN TO BERLIN.

EVERY CITY HAS ITS PROBLEMS, BUT THE FASCINATING PART IS, THAT HERE, ALL PEOPLE, NO MATTER THEIR RELIGION, CULTURE OR ORIGIN LIVE IN PEACE, SIDE BY SIDE. FOR HUNDREDS OF YEARS, A LARGE DIVERSITY OF PEOPLE HAS BEEN INSPIRING EACH OTHER TO GREAT THINGS.

THIS MAKES BERLIN A PERFECT PLACE TO START THE **ONE WORLD DISCOVERY.** OF COURSE, 7 DAYS ARE NOT ENOUGH TO GET TO KNOW THIS CITY IN DETAIL, BECAUSE OF ITS COMPLEX HISTORY. BUT WE CAN POINT OUT SOME THINGS THAT MAKE BERLIN UNIQUE.



BELLA, OLIVIA, EMILIE, JIL AND BELINDA IN FRONT OF A CANDY BOMBER



YANA, BELINDA & EMILIE DISCOVER THE CITY



EVEN THOUGH BERLIN IS CONSTANTLY MODERNIZING, THERE ARE STILL HARSH CONTRASTS BETWEEN CHIC AND UGLY, BRIGHT AND DARK, BETWEEN OLD AND NEW THAT MAKE THE CITY SO SPECIAL. THERE ARE MANY CROWDED PLACES. BUT RIGHT NEXT TO THEM, THERE ARE QUIET PARKS TO FIND PEACE AND REST.

JAZZ CLUBS THAT CELEBRATE THE ORIGINS OF MODERN MUSIC ARE BUILT RIGHT NEXT TO TECHNO BUNKERS THAT HELP YOU FORGET THE DAILY ROUTINE FOR A WHILE. FORTUNATELY, THERE ARE STILL THE GREY FACADES, WHICH ONCE CREATED THAT UNIQUE IMAGE OF BERLIN, AND BEHIND WHICH LIFE WAS SO COLORFUL AND CREATIVE.





AND THERE ARE PLACES LIKE THE **POTSDAMER PLATZ.**
EVEN IF IT HASN'T FOUND ITS FINAL CHARACTER YET, IT'S THE IDEAL
STARTING POINT FOR A **BERLIN DISCOVERY.**

POTSDAMER PLATZ

BAHNHOF POTSDAMER PLATZ



AT THE POTSDAMER PLATZ, SURROUNDED BY CONCRETE BUILDINGS, GLASS, AND STEEL, THERE IS A HOUSE THAT NOT ONLY STANDS FOR LUXURY, BUT ALSO FOR THAT SPECIAL SOMETHING, THE **GRAND HYATT.**

GRAND
HYATT
BERLIN



GRAND
HYATT

BERLIN



This Property is owned by
Al Rayyan
Tourism Investment Co. (AHTIC)
شركة الريان للاستثمار السياحي (أرنتك)
Qatar



Ein- und Aussteigen
frei

Potsdamer Platz
Tor/Arkaden

Voxstraße

1ST
STOP **GRAND HYATT**

THE GRAND HYATT IS A 5-STARS HOTEL AND THE TOP ADDRESS AT THE POTSDAMER PLATZ. IT RADIATES CLASSICAL ELEGANCE BUT, AT THE SAME TIME, IT'S VERY MODERN AND STYLISH.



THE STAFF IS EXTREMELY FRIENDLY AND WELCOMING. ALREADY AT THE RECEPTION, WE FEEL THE UNIQUE SPIRIT OF THE PLACE. ALTHOUGH THE HOUSE HAS A SUPERIOR STANDARD, NOTHING IS PRETENTIOUS. QUITE THE CONTRARY, BECAUSE THE EMPLOYEES ARE EXTREMELY FRIENDLY, CASUAL AND VERY ENTERTAINING. WE FEEL AT HOME, DESPITE ALL THE - FOR US UNACCUSTOMED - LUXURY.



DESIGN WHEREVER YOU LOOK

THE HOTEL IS ALSO AN ART EXHIBITION. YOU CAN FIND TWO COLORFUL AND WILD PAINTINGS BY OTTO ZITKO, WHO LIVES AND WORKS IN VIENNA, ON THE WALLS HIGH ABOVE THE EVENT FLOOR. HE IS KNOWN AS AN AVANT-GARDIST BETWEEN REALISM AND ABSTRACTION. SCATTERED ALL OVER THE HOTEL, NINE PIECES BY JAEHYO LEE CAN BE FOUND.



THE SOUTH-KOREAN ARTIST CREATES ARTWORKS MADE OF **WOOD, METAL AND STONE.** THEY ARE ADORED BY HUNDREDS OF HOTEL GUEST EVERY DAY.

ABOVE THE GUESTS' HEADS

IN THE LOBBY HANGS A GIANT DARK BLUE FRAME MADE OF METAL. THIS PIECE IS BY GEROLD MILLER, WHO LIVES AND WORKS IN BERLIN – KREUZBERG. HE BECAME SUCCESSFUL WITH HIS POST MINIMALISTIC WALL-ART, SCULPTURES, AND SPACE FILLING PAINTINGS.



OF COURSE, THE GRAND HYATT WOULDN'T USUALLY BE IN OUR PRICE RANGE. BUT WHY NOT INDULGE IN SOME LUXURIOUS MOMENTS BEFORE STARTING THE EXHAUSTING DISCOVERY THROUGH BERLIN?

THE PRICES ARE A FAIR DEAL CONSIDERING THE HOTEL'S STANDARD. OUR ROOM IS ABOUT 160 EURO PER NIGHT, INCLUDING ALL OF THE COMFORTS AND AMENITIES THAT COME WITH IT.

THE GRAND HYATT BERLIN OFFERS 326 ELEGANT ROOMS AND 16 LUXURY SUITES IN TOTAL. OF COURSE, ALL ROOMS PROVIDE A TV AND HIGH-SPEED WIFI. MOREOVER, TO SATISFY THE DAILY VITAMIN REQUIREMENT, FREE FRUITS ARE SERVED ON REQUEST DAILY.



OUR ROOM HAS A COMFORTABLE KING-SIZE BED. THE SECOND PART OF THE ROOM HAS A BEAUTY AREA AND A WARDROBE, WITH AN IRON AND AN IRONING BOARD. WHICH IS PRACTICAL, ESPECIALLY WHEN THERE'S AN EVENT IN THE EVENING SUCH AS THE BERLINALE, WHICH TAKES PLACE EACH FEBRUARY RIGHT NEXT TO THE GRAND HYATT, AT THE MARLENE DIETRICH PLATZ.

IN THE NEXT ROOM, THERE IS A BIG BATHTUB AND RIGHT NEXT TO IT A LUXURIOUS SHOWER. EVERYTHING YOU NEED TO RECOVER FROM A LONG DAY AND PREPARE FOR THE NEXT ONE. WE'RE NOW GETTING READY FOR OUR NEXT STOP.



2ND STOP PANORAMAPUNKT





THE CENTER OF THE POTSDAMER PLATZ IS DOMINATED BY THE SO-CALLED KOLLHOFF TOWER. IT ALREADY LOOKS VERY IMPRESSIVE FROM THE OUTSIDE. BUT THE VIEW FROM THE ROOFTOP IS EVEN MORE EXCITING. THIS IS THE SECOND STOP OF TODAY, THE **PANORAMAPUNKT.**



PANORAMAPUNKT



LEFT: ANDREAS STEINHOFF, ABOVE: ANSGAR KORENG CC BY-SA 3.0 (DE)

THE KOLLHOFF-TOWER WAS COMPLETED IN 1999. IT CREATES A DYNAMIC INTERACTION BETWEEN HEIGHT AND VOLUME AS ITS STEP-LIKE FAÇADE TAPERS TO A SLENDER PEAK. THE ROOFS ARE PARTLY COVERED WITH GRASS WHILE THE GROUND AREA IS DOMINATED BY THE COLONNADES AND HOUSES SEVERAL RESTAURANTS AND SHOPS.



THE CROWNING GLORY OF THE KOLLHOFF-TOWER IS THE PANORAMAPUNKT ON THE 24. AND 25. FLOOR.



THE KOLLHOFF TOWER

IS CLAD IN DARK PEAT-FIRED BRICKS, WHICH STAND OUT FROM THE REST OF THE BUILDINGS. THE DARK STONES PROVIDE A STYLISTIC COUNTERPOINT TO THE GEOMETRIC GLASS FACADES OF THE ADJACENT HIGH-RISED DESIGNED BY RENZO PIANO AND HELMUT JAHN. TOGETHER, THE THREE BUILDINGS FORM A STRIKING ARCHITECTURAL ENSEMBLE AT THE POTSDAMER PLATZ.



BEST VIEW OF THE CAPITAL

EUROPE'S FASTEST EXPRESS LIFT BRINGS US TO THE PANORAMAPUNKT IN JUST A FEW SECONDS. BECAUSE OF THE SPEED, THERE IS THE SAME EAR PRESSURE AS IN AN AIRPLANE. THUS, WE GLADLY ACCEPT THE CANDY WHICH WE GET HERE TO EQUALIZE THE EAR PRESSURE.





VIEWS OF BERLIN AT THE POTSDAMER PLATZ

NOT ONLY DO THE 24 LEVELS PROVIDE AN AMAZING VIEW OF THE CITY. BUT THEY ALSO SHOW THE EXHIBITION "VIEWS OF BERLIN AT POTSDAMER PLATZ", PROVIDING INTERESTING INFORMATION ABOUT THE HISTORY OF THIS PLACE. THAT WAY WE TRAVEL FORM THE ORIGIN OF THE POTSDAMER PLATZ TO THE PRESENT TIME.



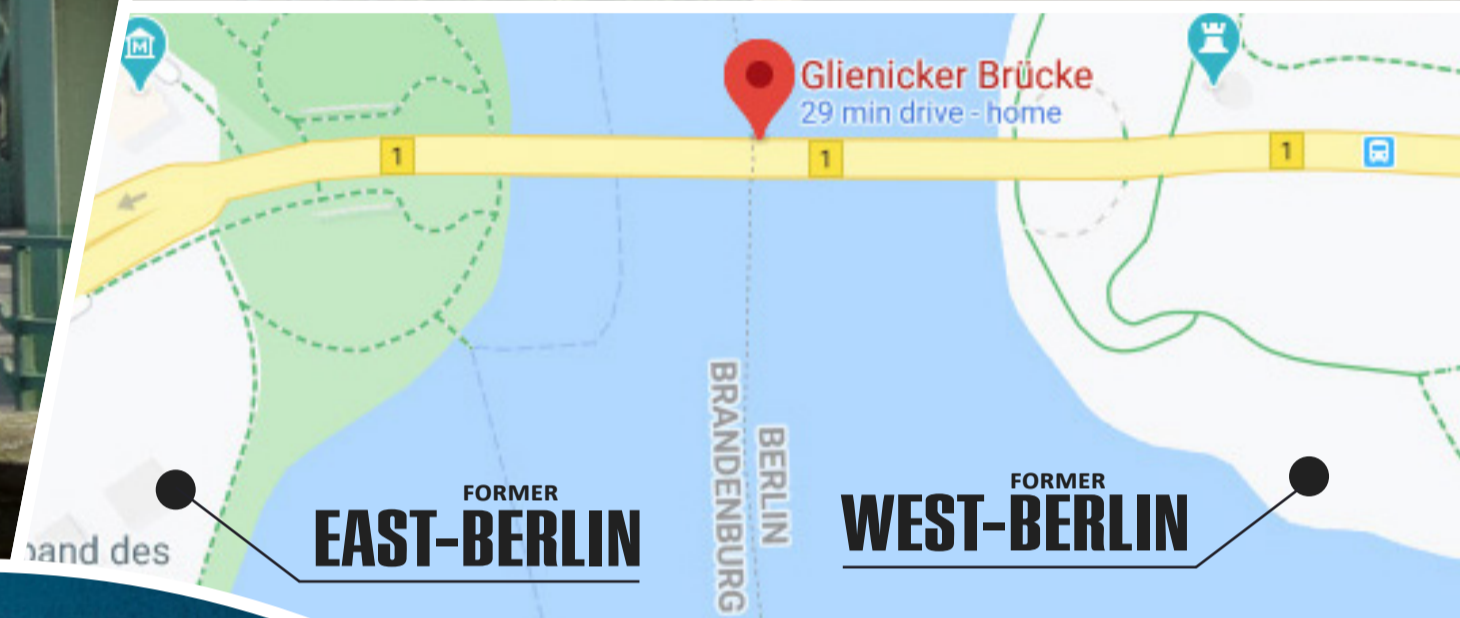
GLIENICKER BRIDGE

©MANFRED BRÜCKELS, CC BY-SA 3.0



SANSSOUCI PALACE

MBZT, P1190390 RWK-2, CC BY-SA 3.0



MOREOVER, THE MADNESS OF THE COLD WAR CAN BE SEEN HERE. BECAUSE THE POLITICAL WEST (WEST BERLIN) WAS LOCATED IN THE EAST HERE. AND, THUS, THE POLITICAL EAST (POTSDAM) USED TO BE IN THE GEOGRAPHICAL WEST. IT'S BAFFLING, ISN'T IT?

POTSDAM'S BEAUTY & THE BRIDGE OF SPIES

THE POTSDAMER PLATZ BEARS THE NAME OF ITS NEIGHBOR CITY POTSDAM WHICH BORDERS DIRECTLY WITH BERLIN IN THE WEST. POTSDAM IS NOT ONLY KNOWN FOR ITS BEAUTY, THE SANSSOUCI PALACE AND THE FILM INDUSTRY, BUT ALSO THE GLIENICKER BRIDGE. THREE BIG AGENT EXCHANGES TOOK PLACE THERE BETWEEN EAST AND WEST DURING THE COLD WAR. OF COURSE, THIS INSPIRED HOLLYWOOD AND EVEN

STEVEN SPIELBERG'S "BRIDGE OF SPIES" REFERS TO IT.



BRIDGE OF SPIES

20TH CENTURY FOX
WALT DISNEY STUDIOS
2015

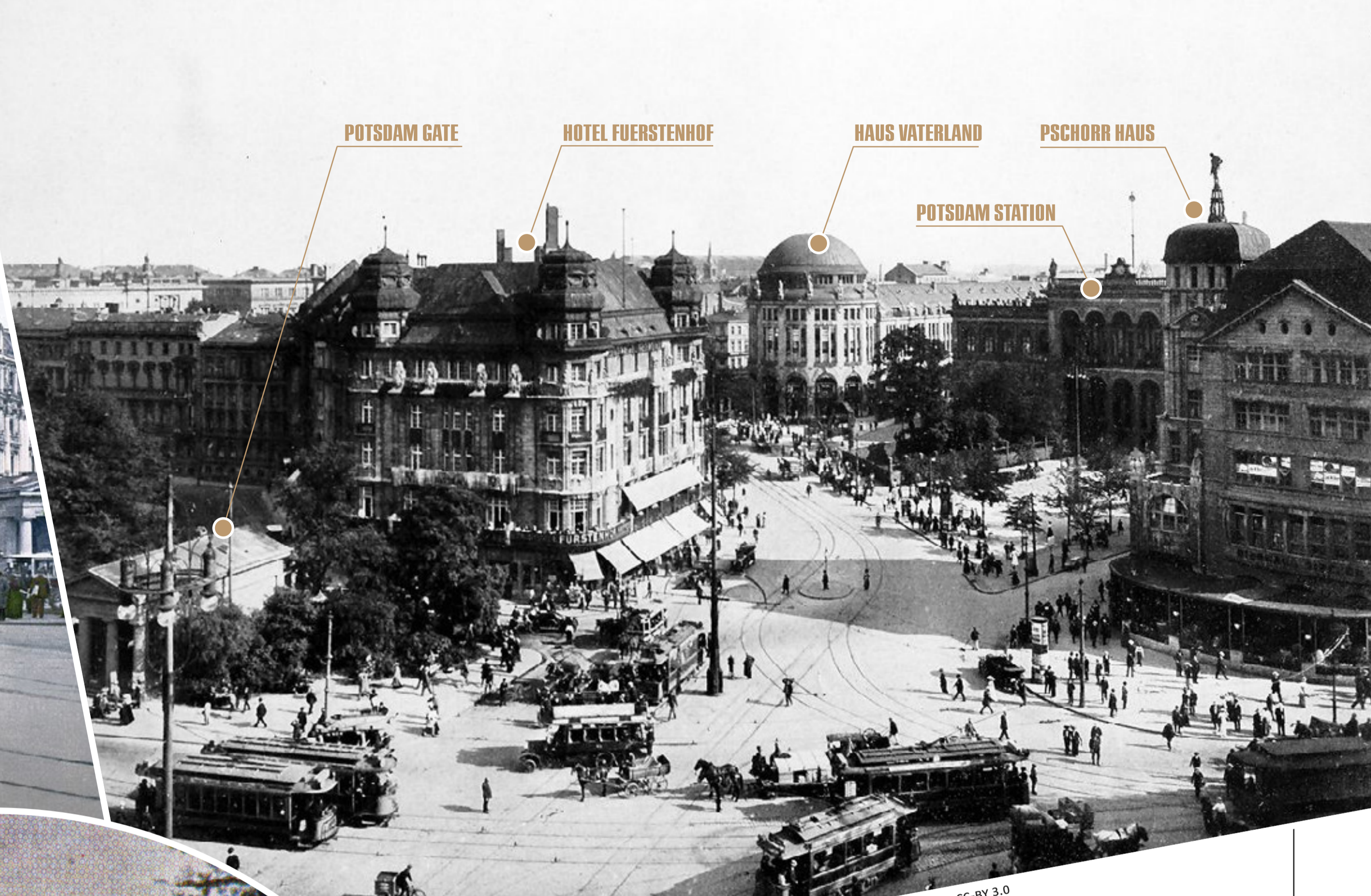


INTERNATIONAL FILM STUDIOS BABELSBERG



HOTEL BELLEVUE

PALACE HOTEL



POTSDAM GATE

HOTEL FÜRSTENHOF

HAUS VATERLAND

POTSDAM STATION

PSCHORR HAUS



LEFT BELOW: BUNDESARCHIV, BILD 102-13681, ABOVE: WILLY PRAGHER, BERLIN LEIPZIGER PLATZ, CC-BY 3.0

BACK TO THE POTSDAMER PLATZ. EVERYTHING BEGAN WITH A GATE TO THE TOWN. **THE POTSDAMER GATE** WAS ONE OF 14 CITY GATES OF BERLIN. A RAILROAD STATION WAS OPENED HERE IN 1838. BECAUSE OF THAT, THE PLACE QUICKLY BECAME A MAJOR CARGO TRANSSHIPMENT POINT. THE FOUNDING OF THE GERMAN EMPIRE IN 1871 LEAD TO A HUGE BOOM FOR THE PLACE. IN A SHORT TIME MANY NEW BUILDINGS AND RESTAURANTS EMERGED. MAGICALLY, THE PLACE ATTRACTED HORDES OF PEOPLE. THE NIGHTLIFE BEGAN TO FLOURISH.

DUE TO THE ECONOMIC UPTURN, THE WEALTHY ELITE WAS DRAWN TO THE POTSDAMER PLATZ, THAT'S WHY THE FAMOUS TIERGARTEN VILLAS, **THE GRAND HOTEL BELLEVUE,** AND **THE PALAST HOTEL** WERE BUILT BEFORE THE TURN OF THE MILLENNIUM. A BIT LATER, **THE FÜRSTENHOF** AND **THE HOTEL ESPLANADE** WERE OPENED. SO, WITHIN SOME DECADES, A BUSTLING QUARTER HAD EVOLVED.

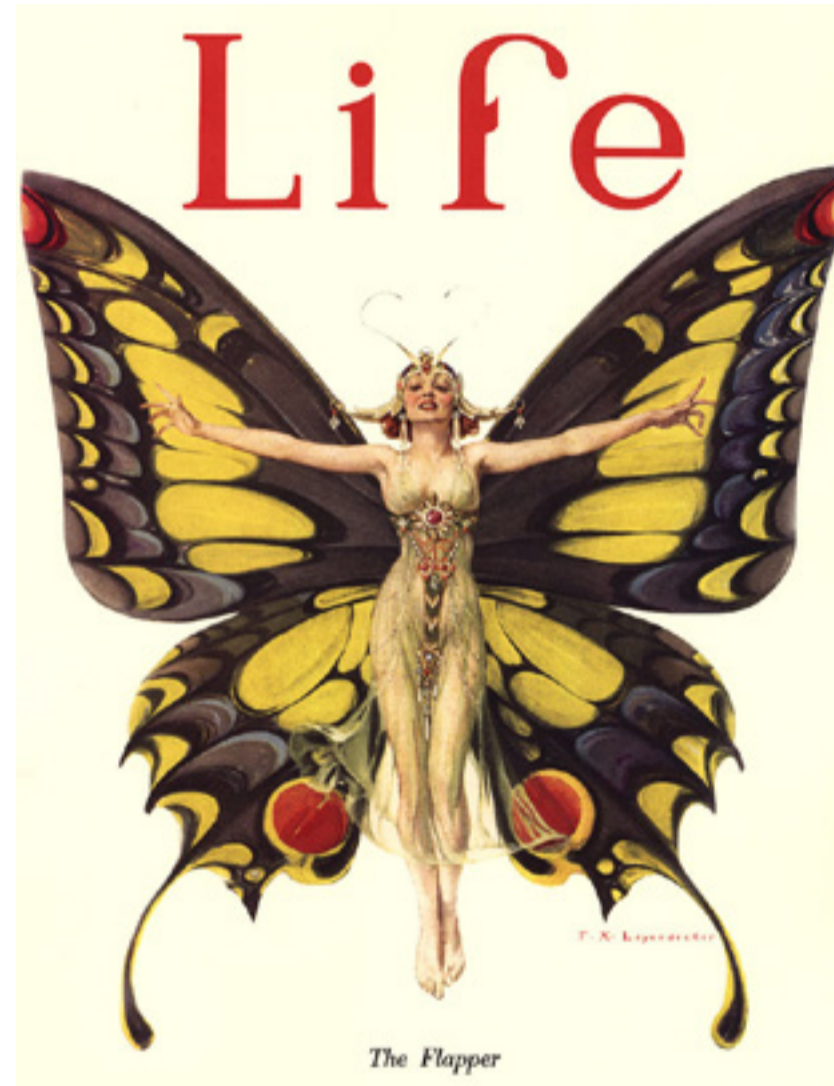


VIBRANT DAYS & NIGHTS IN THE ROARING 20s

THE POTSDAMER PLATZ WASN'T ONLY THE HEART OF BERLIN IN THE TWENTIES, BUT ALSO THE CENTER OF EUROPE. BECAUSE OF ITS SHOPS, RESTAURANTS, BARS, THEATERS AS WELL AS THE UNIQUE NIGHTLIFE, PEOPLE CAME HERE FROM ALL OVER THE WORLD.

IT WAS A TIME OF CHANGE. THE FEMINIST MOVEMENT GAINED MOMENTUM, WHICH WOMEN EXPRESSED THROUGH A NEW WAY OF SELF-CONFIDENCE IN FASHION, ART, SPORTS AND EVEN IN POLITICS. THIS, AND MANY OTHER DEVELOPMENTS WERE CELEBRATED IN THE LEGENDARY "HAUS VATERLAND" WITH ITS "RHEINTERRASSEN", THE UFA-FILMPALAST (ONE OF THE FIRST MOVIE THEATERS), AND MANY OTHER LOCATIONS IN BERLIN. THEY ATTRACTED PEOPLE FROM FAR AWAY. HERE, TRULY EVERYBODY WAS WELCOME.

AND SO, BERLIN BECAME THE SYMBOL OF FREEDOM AND OPENNESS AS WELL AS THE PLACE TO BE IN THAT TIME.



EUROPE'S FIRST TRAFFIC LIGHT

ALREADY WITH THE ESTABLISHMENT OF THE BERLIN POTSDAM RAILWAY STATION, THE POTSDAMER PLATZ BECAME ONE OF THE BUSIEST PLACES IN EUROPE. WITH THE INVENTION OF AUTOMOBILES AND THE OPERATION OF FIVE BUS LINES, THE SUBWAY STATIONS, AND 26 TRAMS IN TOTAL, IT BECAME A MORE AND MORE CHAOTIC PLACE. MORE THAN 20.000 CARS AND 80.000 PEOPLE CROSSED THE SQUARE EVERY DAY. IT WAS TIME TO CONTROL THE CHAOS. THEREFORE, A FIVE-CORNERED TRAFFIC TOWER WAS ERECTED IN 1924. IT WAS EUROPE'S FIRST TRAFFIC LIGHT, WHICH BECAME A LANDMARK AND A SYMBOL OF THE PULSATING METROPOLIS BERLIN.



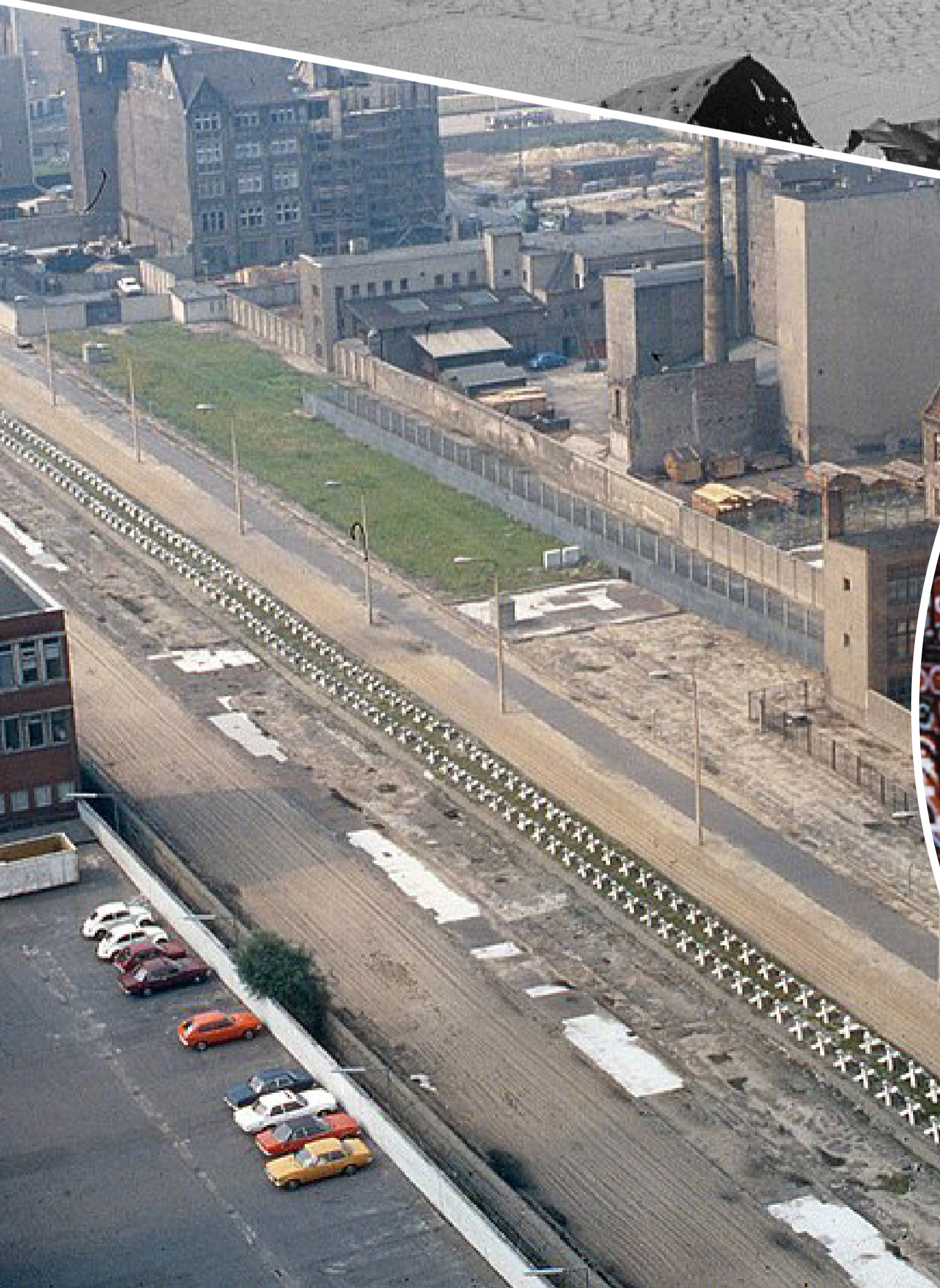
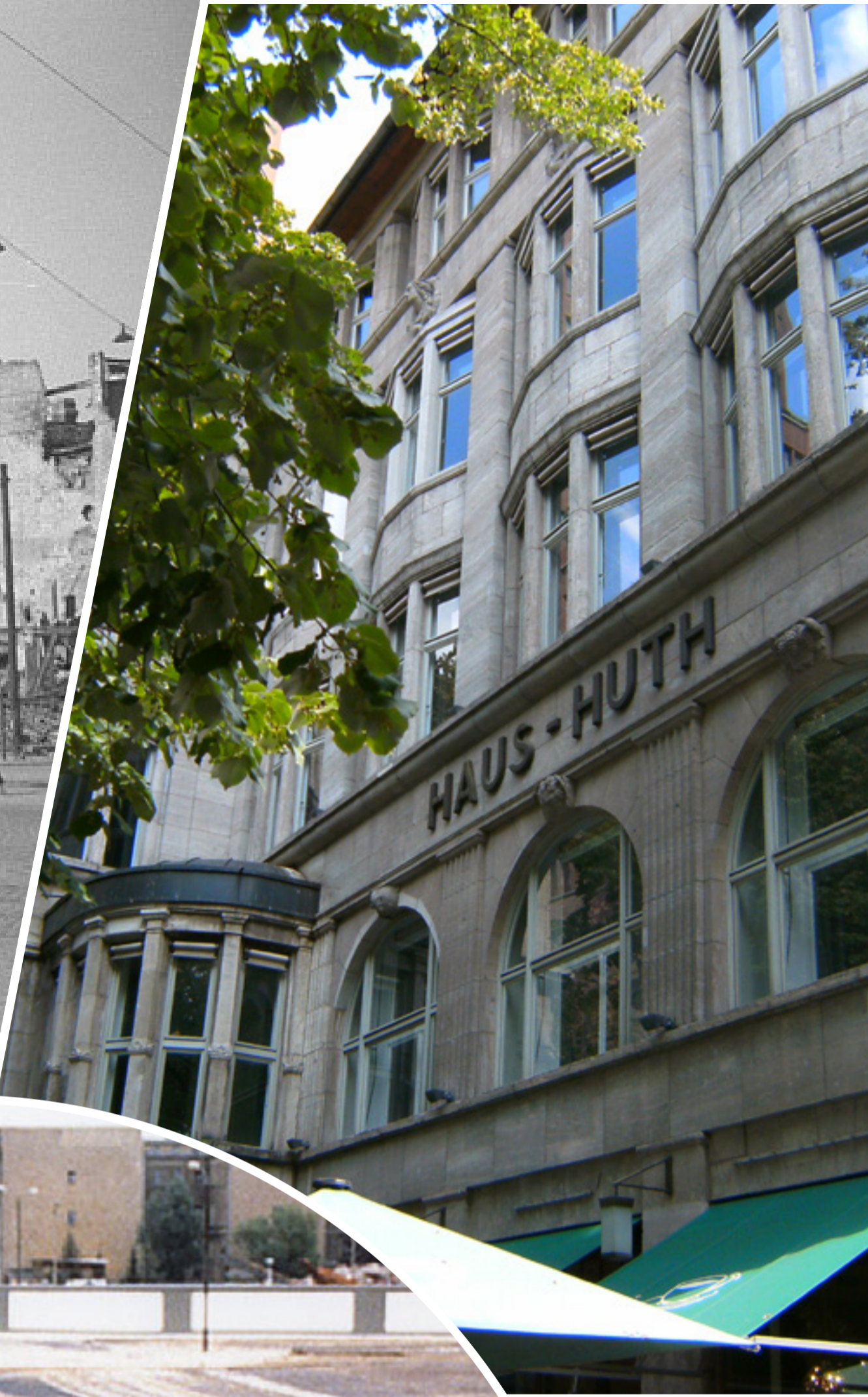
MOST PEOPLE DON'T TAKE ANY NOTICE OF IT NOWADAYS. BUT EUROPE'S FIRST TRAFFIC LIGHT, OR AT LEAST A COPY OF IT, IS STILL LOCATED AT THE POTSDAMER PLATZ.



THIS PAGE: BUNDESARCHIV BILD 102-00843
LEFT SIDE, ABOVE 3RD: BUNDESARCHIV BILD-P062899
BELOW LEFT: WILLY PRAGHER



THIS PAGE: FOTOTHEK DF PK 0000145 001
BELOW: BEENAROUNDAWHILE, VIEW FROM AXEL SPRINGER HOUSE
RIGHT: FOTOTHEK DF ROE-NEG 0006160 019
MIDDLE: ROLAND H. BUEB
CIRCLE: NANCY WONG



THE WAR & THE IRON CURTAIN

THE POTSDAMER PLATZ WAS ALWAYS IN CHANGE. THE OLD WAS CONSTANTLY REPLACED WITH SOMETHING NEW. BUT WORLD WAR II DESTROYED THE PLACE ALMOST COMPLETELY.

THE REMNANT

ONLY THE WEINHAUS HUTH AND SOME PARTS OF THE HOTEL ESPLANADE SURVIVED THE WAR. SADLY, THE WEINHAUS IS BORDERED BY NEW BUILDINGS NOWADAYS. ONE MUST KNOW WHERE TO FIND IT TO APPRECIATE ITS BEAUTY. THE KAISERSAAL (EMPEROR'S HALL) OF THE HOTEL ESPLANADE CAN BE FOUND IN THE SONY CENTER TODAY. STILL, BANQUETS AND EVENTS TAKE PLACE HERE.



HIGHEST WATCHTOWER

THE RUIN OF THE HAUS VATERLAND



THIS PAGE: GEORGE LOUIS
LEFT SIDE: EDWARD VALACHOVIC
CIRCLE: BUNDESARCHIV, BILD 183-1990-0722-402
PINK FLOYD IN BERLIN 1990

VIEW FROM WEST-BERLIN. IN THE FOREGROUND A GHOST STATION OF THE SUBURBAN RAILWAY

AFTER THE WAR, THE PLACE TURNED FROM THE MOST TUMULTUOUS, BUSTLING PLACE IN EUROPE INTO A DEATH ZONE, THE SO-CALLED NO MAN'S LAND. THE GDR PLACED THE WALL EXACTLY ALONG THAT PLACE. THEREFORE, THE POTSDAMER PLATZ BECAME A FRINGE AREA AND ONE OF THE MOST CHARACTERISTIC FACES OF THE IRON CURTAIN FOR 28 YEARS.

WHILE NEARLY ALL BUILDINGS WERE **TORN DOWN** ON THE EAST SIDE, THE RUINS ON THE WESTERN SIDE OF THE WALL WERE REMOVED BIT BY BIT BY THE WEST-BERLIN SENAT. THE REMAINS OF THE VOX-HAUS, THE PRINZ-ALBRECHT-PALAIS, THE HAUS VATERLAND, AND THE NATURAL HISTORY MUSEUM WERE GRADUALLY CARTED OFF.



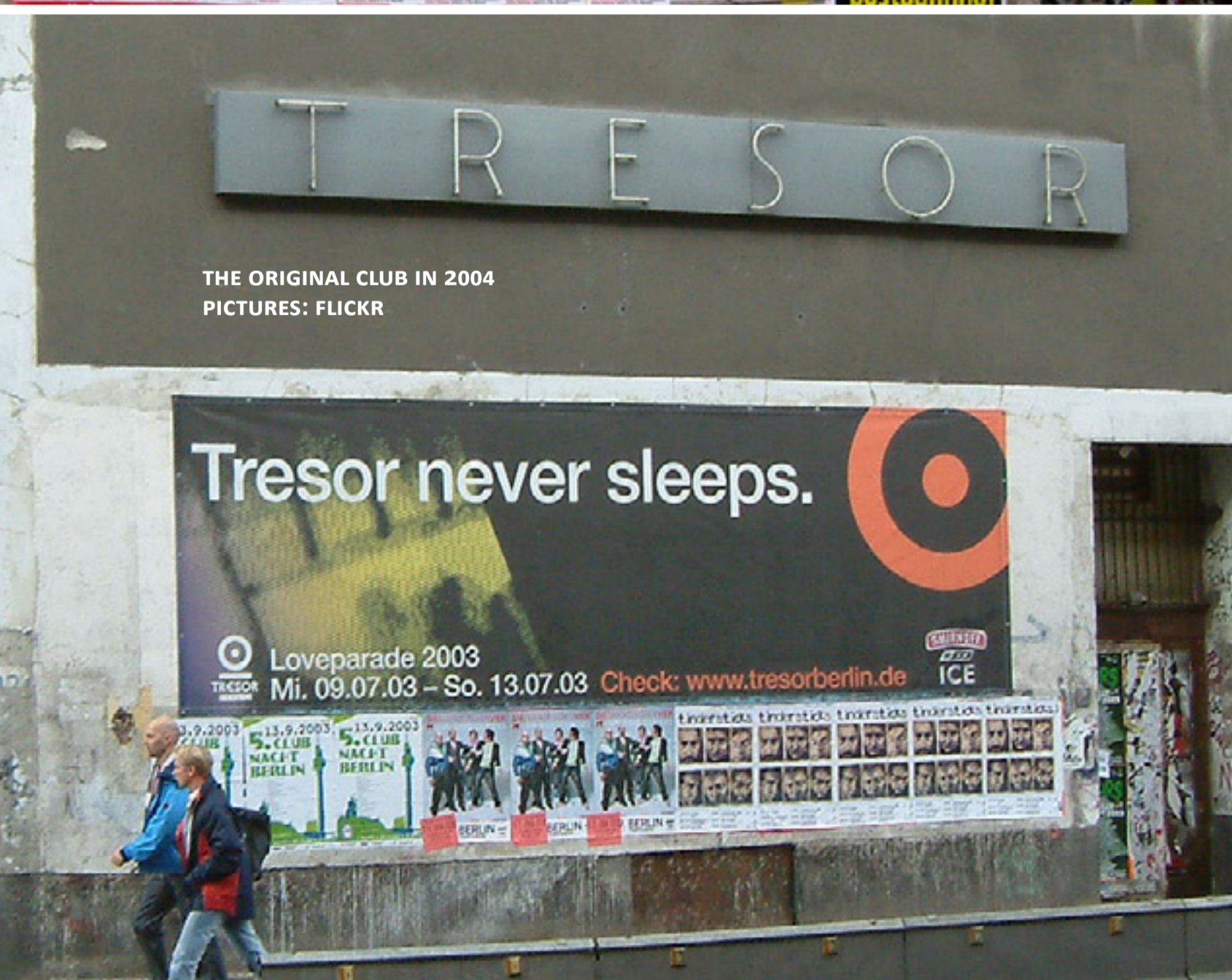
THE REUNIFICATION

UNTIL 1989, THE POTSDAMER PLATZ WAS THE WIDEST POINT IN BERLIN'S DEATH STRIP. A WASTELAND. BUT INSTANTLY AFTER THE FALL OF THE WALL, PEOPLE BEGAN TO ADDRESS ITS RECONSTRUCTION. JUST TEN MONTHS AFTER THAT, THE POTSDAMER PLATZ AGAIN BECAME A POPULAR, VIBRANT AREA. IN AUGUST 1990 IT HOSTED THE LARGEST ROCK CONCERT IN HISTORY.

PINK FLOYD GAVE THEIR LEGENDARY CONCERT "THE WALL". OVER 450.000 PEOPLE CAME TO CELEBRATE THAT EVENT AMIDST THE RUINS OF THE POTSDAMER PLATZ AND THE WALL.

THE PARTY STARTS AND GERMAN TECHNO CONQUERS THE WORLD

OF COURSE, BESIDES ALL THE HURTFUL EFFECTS OF THE BERLIN WALL, IT HAD ALSO SOMETHING BENEFICIAL. THE WALL PRESERVED SOME VERY SPECIAL PLACES FROM THE TIMES BEFORE AND DURING THE WAR. ONE OF THEM WAS THE **TRESOR**.



THE ORIGINAL CLUB IN 2004
PICTURES: FLICKR



BEATE HEYMANN SHOW PRESENTED AT THE NEW TRESOR IN THE POWER PLANT, PHOTOS: MARCO KOKKOT

LOCATED IN THE LEIPZIGER STRASSE, WHICH CROSSES THE POTSDAMER PLATZ, THE OLD VAULT OF THE FORMER DEPARTMENT STORE WERTHEIM HAD BEEN FORGOTTEN FOR ALMOST 30 YEARS. BUT PEOPLE FROM THE **BERLIN TECHNO SCENE** DISCOVERED THE MYSTICAL BASEMENT FULL OF LOCK-BOXES AFTER THE REUNIFICATION. AND SO, ONE OF THE MOST POPULAR TECHNO CLUBS WORLDWIDE WAS OPENED HERE. UNFORTUNATELY, BERLIN SOLD THE AREA TO A GROUP OF INVESTORS, WHO PREFERRED TO BUILD OFFICES INSTEAD OF KEEPING THE BERLIN SPIRIT ALIVE. NONETHELESS, THE BERLINERS ARE CREATIVE, AND SO THE CLUB WAS REOPENED IN A DECOMMISSIONED TRACK OF THE COMBINED HEAT AND POWER PLANT HEIZKRAFTWERK BERLIN-MITTE (COGENERATION PLANT BERLIN CENTER) IN KREUZBERG.

QUICKLY, THE NEW LOCATION AGAIN TURNED INTO A POPULAR SPOT OF THE CITY. **THE BERLIN FASHION WEEK** TOOK PLACE HERE FOR A LONG TIME. GERMAN AND INTERNATIONAL LABELS PRESENTED THEIR NEW COLLECTIONS IN **AMAZING SHOWS** AS WELL AS FASHION EXHIBITIONS.



F.L.T.R.: AVDA/AVDA-FOTO.DE, ROGER KOSLOWSKI, SHADOWGATE, TUXYSO, MAREK ŚLIWECKI


IN THE 1990S, THE POTSDAMER PLATZ WAS EUROPE'S LARGEST URBAN CONSTRUCTION SITE. IT WOULD FILL BOOKS TO WRITE ABOUT ALL OBSTACLES AS WELL AS ACHIEVEMENTS IN THIS CONTEXT. HOWEVER, THE RESULT IS THE PLACE THAT WE KNOW TODAY AND IT'S CERTAINLY A MATTER OF TASTE IF YOU LIKE IT OR NOT.

MOST BERLINERS DIDN'T LIKE THE NEW POTSDAMER PLATZ AT FIRST. THEY HAD WISHED TO GET THE OLD ONE BACK. BY NOW THEY MORE OR LESS ACCEPTED IT. TODAY THE POTSDAMER PLATZ AGAIN HAS RESTAURANTS, THEATRES, CINEMAS, AND CAFÉS. IT'S ALSO THE MAIN VENUE OF THE ANNUAL BERLINALE.

DURING THE PROCESS OF BUILDING THE ARCHITECTS AND CONSTRUCTORS PAID ATTENTION TO SHAPE THE PLACE IN A CLIMATE-FRIENDLY WAY. THAT'S WHY ONE-THIRD OF ALL ROOFS, ABOUT 50.000 SQUARE METERS, ARE GREENED. DUE TO THE GREEN ROOFTOPS, A HUGE PART OF THE RAINWATER CAN BE ABSORBED AND EVAPORATED AFTERWARDS.



CIRCLE: VIEW FROM THE LEIPZIGER STRASSE
THIS IMAGE: POTSDAMER PLATZ STATION



F.L.T.R.: MAREK ŚLIWECKI,
ANTEERU, MICHAEL J. ZIRBES,
MANFRED BRUECKELS

BAHNHOF POTSDAMER PLATZ

IN THE BACKGROUND: THE RITZ CARLTON



THIS CONTRIBUTES TO THE IMPROVEMENT OF

THE CLIMATE OF THE SURROUNDING AREA.

THE WATER IS ALSO SAVED IN TANKS AND USED FOR WATERING THE GREEN AREAS AROUND THE BUILDINGS AS WELL AS TO FLUSH TOILETTES. THIS TECHNOLOGY REDUCES THE CONSUMPTION OF DRINKING WATER. ULTIMATELY, 20 MILLION LITERS ARE SAVED EACH YEAR.

THE USE OF AIR CONDITIONERS WAS ALSO RENOUNCED. INSTEAD - LIKE BACK IN THE OLD DAYS - YOU CAN OPEN THE WINDOWS AND ENSURE A NATURAL ROOM CLIMATE. IT IS NEARLY UNBELIEVABLE HOW EASY CLIMATE PROTECTION CAN BE. THE HOUSES HAVE

SMART VENTILATION AS WELL AS HEAT-SYSTEMS. THAT WAY, THE HEAT-STORING PROPERTIES OF STEEL CONCRETE CAN BE USED TO MINIMIZE TEMPERATURE FLUCTUATIONS. THIS AND OTHER REFINEMENTS LEAD TO A DECREASE IN THE ENERGY REQUIREMENT AROUND 50 % COMPARED TO CONVENTIONAL AIR CONDITIONERS.

THE QUARTER POTSDAMER PLATZ IS FREE OF ABOVE-GROUND DELIVERY TRAFFIC. UP TO 260 VEHICLES CAN DRIVE UNDERGROUND AND SUPPLY THE BUILDINGS TO RELIEVE THE ROAD TRAFFIC. LIKEWISE, THE WASTE DISPOSAL OF THIRTEEN DIFFERENT TYPES OF WASTE IS DONE UNDERGROUND AND CENTRALLY. NEVERTHELESS, DESPITE ALL THESE GREAT ACCOMPLISHMENTS, THERE IS STILL A GREAT DEVELOPMENT POTENTIAL AROUND THE POTSDAMER PLATZ TO MAKE IT AS GLOWING AND ATTRACTIVE AS IT ONCE WAS, 100 YEARS AGO.



GREEN ROOFS



BACK TO THE 24. FLOOR OF THE

PANORAMAPUNKT, WHERE WE CAN SEE MOST OF BERLIN AND
LEARN MORE ABOUT IT. BESIDES, WE CAN
FIND AN ORIGINAL PIECE OF THE FORMER BERLIN WALL HERE. BUT, OF COURSE, THE
UNIQUE VIEW PLAYS THE MAIN ROLE HERE. IT'S EVEN MORE IMPRESSIVE FROM THE

25TH FLOOR. HERE WE CAN ADMIRE THE ENTIRE CITY THROUGH A

360° PANORAMIC VIEW.

INFORMATIVE GRAPHICS DESCRIBE WHAT THERE IS TO SEE.



***I CAN REMEMBER
STANDING, BY THE WALL
AND THE GUNS SHOT ABOVE OUR HEADS
AND WE KISSED,
AS THOUGH NOTHING COULD FALL
(HEROES, DAVID BOWIE)***

THE HANSA STUDIOS CAN BE ALSO SEEN FROM THE PANORAMA-POINT. SUPERSTARS LIKE DAVID BOWIE PRODUCED THEIR HITS AT THIS PLACE. THE STUDIO WASN'T ONLY FAMOUS BECAUSE OF ITS WELL-SKILLED STAFF AND SUPERB SOUND TECHNOLOGY. MOREOVER, IT OFFERED AN UNFORGETTABLE VIEW TO THE BERLIN WALL AND THE WATCHTOWERS. ACCORDING TO THE LEGEND, BOWIE WAS INSPIRED TO THE NOTORIOUS LINES OF HIS SONG "HEROES" (SEE LEFT SIDE), WHEN HE LOOKED OUT OF THE WINDOW OF STUDIO 1. IT'S SAID THAT HE THEN SAW HIS PRODUCER TONY VISCONTI KISSING A GIRL IN THE SHADOW OF THE WALL.

THE HANSA STUDIOS





OTHER STORIES LIKE THOSE OF
**DEPECHE MODE,
NICK CAVE, IGGY POP**
AND MANY OTHERS ARE WAITING FOR
US TO BE DISCOVERED.

AN IMPRESSIVE STORY IS ABOUT

U2. THEY WANTED TO PRODUCE THEIR ALBUM IN BERLIN JUST AT THE TIME OF THE FALL OF THE WALL AND WERE SIMPLY OVERWHELMED BY THE EVENTS. THE WORLD-SHAKING CIRCUMSTANCES LED TO A CREATIVE BLOCKADE - TOO MUCH INPUT, TOO MANY PARTIES, TOO MUCH EVERYTHING. THE PRODUCTION OF THE ALBUM AS WELL AS THE FUTURE OF THE BAND WAS PUT TO A HARD TEST. IT SEEMED THAT IT COULD BE THE END FOR THEM, BUT FINALLY, THEY CAME TOGETHER IN THE FAMOUS HANSA-STUDIOS TO JAM. THE RESULT WAS THE SONG:

ONE. IT'S CERTAINLY THE MOST BEAUTIFUL, INTENSE AND EMOTIONAL SONG OF THE BAND. THE SUCCESSFUL BAND IMMORTALIZED THEIR BERLIN EXPERIENCES ON THEIR ALBUMS "ACHTUNG BABY", "ZOOPOPA" AS WELL AS "ZOO TV TOUR". ZOO STANDS FOR THE BAHNHOF ZOO, WHICH IS LOCATED IN WEST BERLIN. ALSO, DAVID BOWIE IS ASSOCIATED WITH THIS TRAIN STATION. NOT ONLY BECAUSE HE PLAYED A ROLE IN THE MOVIE "CHRISTIANE F." (GERMAN: "WIR KINDER VOM BAHNHOF ZOO", ENGL.: US KIDS FROM STATION ZOO), BUT ALSO BECAUSE OF HIS SONG "HEROES", WHICH BECAME THE ANTHEM OF THIS BESTSELLING FILM ADAPTATION.



PHOTO: UNIVERSAL MUSIC

SOLAR RESTAURANT

ANHALTER BAHNHOF

IF WE LET OUR EYES WANDER WE CAN SEE THE
SOLAR RESTAURANT,
AND THE RUIN OF THE ONCE IMPORTANT
ANHALTER BAHNHOF...



... AND MANY OTHER PLACES WHICH
WE WILL BE VISTING IN THE NEXT
SEVEN DAYS.

TEMPELHOF AIRPORT

KREUZBERG

TECHNIKMUSEUM




WEINMEISTER HOTEL

**HACKESCHER
MARKT**

DDR MUSEUM

GENDARMENMARKT

**FRIEDRICHSTADT
PALAST**



FROM THE PANORAMAPUNKT WE ALSO SEE THE
FRIDAYS FOR FUTURE
DEMONSTRATION AT BERLIN'S MOST POPULAR SYMBOL
THE BRANDENBURG GATE.

STARS FROM MUSIC, FILM, YOUTUBE AND OTHER FIELDS
HAVE COME TO SUPPORT THIS MOVEMENT, TO KEEP IT
GOING AND GROWING.



AS IS WELL KNOWN, THE MOVEMENT BEGAN WITH THE YOUNG GIRL **GRETA THUNBERG**, WHO TOOK TO THE STREETS ALONE IN STOCKHOLM TO DEMONSTRATE AGAINST THE DESTRUCTION OF OUR ENVIRONMENT. HER ACTIONS BIRTHED TO ONE OF THE MOST POWERFUL AND MOST IMPRESSIVE MOVEMENTS OF THE LAST 30 YEARS.

PEOPLE HAVE BEEN CAMPAIGNING FOR ENVIRONMENTAL PROTECTION FOR MANY DECADES. IN GERMANY, IT IS THE GREEN PARTY THAT HAS BEEN FIGHTING FOR IT SINCE THE 1980S. ALSO, MANY HOLLYWOOD FILMS AND SERIES HAVE DEALT WITH THIS TOPIC, DIRECTLY OR INDIRECTLY.

THEREFORE, IT IS TO BE HOPED THAT IN THE FUTURE THE MOVEMENT WILL NOT BE DRIVEN FORWARD WITH CONSTRUCTIVE IDEAS AND A LET'S-DO-IT-TOGETHER ATTITUDE TO **PRESERVE OUR BEAUTIFUL WORLD.**



WHEN THE WEATHER IS NICE,

A VISIT TO THE PANORAMAPUNKT IS ALSO A GOOD WAY FOR DECELERATION AND TO FIND CALMNESS. WE SEE THE HUSTLE AND BUSTLE DOWN THERE ON THE STREETS, BUT AT THE SAME TIME, WE ENJOY THE PEACE AND FRESH AIR UP HERE. ONLY THE WIND AND A VERY SOFT SOUND COMING FROM THE CITY DOWN THERE CAN BE HEARD. SIMPLY LOVELY.

EVEN WITH BAD WEATHER,

IT IS WORTH IT, BECAUSE THE ALL-ROUND GLAZED PANORAMA CAFÉ IN THE PURISTIC STYLE OF THE 30S ADDS DELICIOUS SWEETS AND DRINKS TO THE LOVELY VIEW.

SIMPLY WONDERFUL TO RELAX AND ENJOY.

IN THE MORNING AND THE EVENING - DEPENDING ON THE SEASON - SUNRISE AND SUNSET ENTERTAIN YOU WITH IMPRESSIVE LIGHT PLAY.



**BLUE
MAN
GROUP
BERLIN**

**15
YEARS**

**3RD
STOP
BLUE MAN TALK**

THE PANORAMAPUNKT CAFÉ

IS THE PLACE WHERE WE HAVE AN APPOINTMENT WITH TWO EQUALLY IMPRESSIVE MEN FROM WHOM WE WANT TO LEARN MORE ABOUT THEIR LIFE AND WORK: JENS FISCHER RODRIAN AND NADIM HELOW, PART OF

THE BLUE MAN GROUP.





WATCH THE COMPLETE INTERVIEW HERE



NADIM HELOW PERFORMANCE ARTIST



NADIM, PERCUSSIONIST AND FATHER OF TWO DAUGHTERS, HAS BEEN A MEMBER OF THE BLUE MAN GROUP FOR 15 YEARS. OF COURSE, AFTER SUCH A LONG TIME, THE BLUE MAN GROUP IS SOME KIND OF FAMILY FOR HIM, IT'S ALL ABOUT THEATER. IT'S ACTUALLY NOT ABOUT MAGIC, BUT IT BECOMES MAGICAL WHEN THE GUYS APPEAR ONSTAGE OR WHEREVER. NADIM LOVES THE SPECIAL EFFECT CREATED BY THE BLUE MASKS. THEY DON'T APPEAR TO BE HUMAN ANYMORE, EVEN THOUGH THEY STILL ARE.

IN REAL LIFE, THERE ARE RULES HE HAS TO FOLLOW - JUST LIKE ANYBODY ELSE. BUT AS SOON AS HE WEARS THE MASK, IT HELPS HIM TO STEP INTO A DIFFERENT CHARACTER - A DIFFERENT IDENTITY. PEOPLE'S PERCEPTION TOTALLY CHANGES, AND IT ALLOWS HIM TO ACT OUTSIDE OF THE ORDINARY.

THE BLUE MEN ARE VERY QUIET, BUT FUNNY IN THEIR WEIRDNESS AND FRANKNESS. THEY OFFER A HUGE SPECTRUM OF CHARACTERISTICS.

NADIM EXPLAINS THE SPECIAL FEELING OF WALKING THROUGH THE AUDIENCE AND COMING VERY CLOSE TO THE PEOPLE. IT CREATES A PRECIOUS MOMENT, WHERE NO DIFFERENCES BETWEEN THE PEOPLE COUNT ANYMORE: HE THEN ONLY SEES THEIR HUMANITY, AND THEIR PURE JOY.

HE TELLS US HOW IMPORTANT IT IS FOR THE BLUE MAN TO NEVER JUDGE ANYONE. THERE IS NO RIGHT OR WRONG FOR THEM. A BLUE MAN CANNOT FAIL. WHEN SOMETHING SEEMS TO FAIL, THE FUNNIEST AND MOST UNPREDICTABLE MOMENTS CAN GROW FROM THERE.



NADIM DESCRIBES THE BLUE AS A VERY NEUTRAL AND POWERFUL COLOR. ACTUALLY, EVERY COLOR TRIGGERS AN ASSOCIATION. THUS, THE IDEA WAS TO CREATE CHARACTERS THAT HAVE NO AGE, GENDER, RELIGION OR ETHNICITY. SO, THE BLUE MAN GROUP WAS BORN TO BRING OUT ONLY THE PURE HUMANITY. BESIDES, THE NAME IS A BIT MISLEADING, BECAUSE THERE ARE ALSO WOMEN IN THE GROUP.

ONE WOMAN TAKES PART IN THE TRAININGS IN BERLIN. BUT CERTAINLY MORE FEMALE TALENTS CAN BE SEEN ON THE STAGE IN THE FUTURE.



**BLUE
MAN
GROUP
BERLIN**

**15
YEARS**

JENS FISCHER RODRIAN ART DIRECTOR, MUSICIAN

MEANWHILE, JENS FISCHER RODRIAN JOINS US. THE ART DIRECTOR OF THE BLUEMAX THEATER JUST CAME FROM THE FRIDAYS FOR FUTURE DEMONSTRATION. HE HE SUPPORTS THE YOUNGER GENERATIONS IN THEIR COMMITMENT TO FIGHT FOR THE ENVIRONMENT.

IN HIS OPINION THOSE WHO SAY THAT THE PEOPLE SHOULD RATHER GO TO SCHOOL OR WORK AND DEMONSTRATE ON WEEKENDS, DIDN'T UNDERSTAND THE MEANING OF A STRIKE. BECAUSE, NO WORKER WOULD CHANGE THEIR SITUATION WITH A STRIKE DURING THE LEISURE TIME. THEREFORE, THE STUDENTS HAVE TO DO IT DURING THE REGULAR SCHOOL TIME, TOO.

"I HAVE TWO DAUGHTERS WHO ASK ME VERY HARD QUESTIONS. FOR EXAMPLE, WHY WE DIDN'T DO ANYTHING BEFORE AND WHY WE HAVE STILL NO TEMPO LIMIT ON THE AUTOBAHN. GERMANY IS THE ONLY PLACE WHERE YOU CAN DRIVE AS FAST AS YOU CAN. BESIDES THE EXHAUST GASES, IT HAS ANOTHER NEGATIVE ECOLOGICAL EFFECT THROUGH PERMANENT HIGHWAY REPARATIONS."

"ALL WHAT WE CAN DO IS TO HELP YOU OUT, BECAUSE WE REALLY FUCKED IT UP. I SHOULDN'T HAVE SAID IT, BUT IT'S TRUE."



BESIDES THE BLUE MAN GROUP,

JENS HAS AN OWN SOLO PROJECT. RECENTLY, HE HAS RELEASED HIS NEW ALBUM. IN GENERAL, ALL MEMBERS OF THE BLUE MAN GROUP RUN THEIR OWN PROJECTS. IT'S A GENERAL CONCEPT OF THE SHOW TO WORK WITH HALF TIME MUSICIANS.

BECAUSE IN THAT WAY, EVERYBODY CAN KEEP

OPEN MINDED, WHICH IS AN ADVANTAGE FOR THE ENTIRE TEAM'S **CREATIVITY AND INSPIRATION.**

OTHERS HAVE TO DO ONE SINGLE SHOW FOR SEVERAL YEARS IN ROW. OF COURSE, THAT DRAGS YOU DOWN AND BORES YOU AFTER A WHILE. BUT THIS CONCEPT ALLOWS THE BLUE MAN TO ALWAYS BE FRESH AND PASSIONATE. AND THAT BECOMES VERY TANGIBLE FOR THE AUDIENCE IN EVERY SINGLE SHOW.



THE BLUE MAN GROUP HAS ONLY ONE FACE. THEY HAVE NO HAIR, NOT EVEN EARS. OF COURSE, THEY HAVE DIFFERENT EYES AND, THUS, THERE IS SOME KIND OF INDIVIDUALITY. IF WE MEET THEM ON STREET WITHOUT MAKEUP, WE WOULDN'T RECOGNIZE THEM. HOWEVER, ONSTAGE THEY ARE STARS. NOT ONLY IN GERMANY, BUT ALSO IN LAS VEGAS AND OTHER CITIES AROUND THE WORLD.

"WHAT WE BASICALLY DO IS TO PUT A BLUE MASK ON THE GUYS, IN ORDER TO TAKE THE SOCIAL MASK AWAY."
JENS EXPLAINS:

"I'LL NEVER FORGET WHEN MY LITTLE DAUGHTER MET HER COUSIN FOR THE VERY FIRST TIME. SHE ONLY SPOKE GERMAN. HE ONLY SPOKE ENGLISH. THEY SAT ON THE COUCH AND LOOKED AT EACH OTHER. AFTER SOME SECONDS, SHE BLEW IN HIS FACE. AND HE BLEW BACK. THEY DID SO FOR HALF AN HOUR, AND, IN THAT WAY, THEY NEEDED NO WORDS TO GET TO KNOW EACH OTHER."



"THIS IS SIMILAR TO WHAT THE BLUE MAN GROUP IS DOING. IT'S ALL ABOUT COMMUNITY, AND THE WHOLE IDEA OF A COMMUNITY IS THAT YOU COME SOMEWHERE AS A COMPLETE STRANGER. BUT AFTER AN HOUR OR TWO, OR WITHIN A SHORTER TIME, YOU REALIZE THAT YOU AREN'T A STRANGER ANYMORE.

EXACTLY THIS IS THE PHILOSOPHY OF THE BLUE MAN GROUP:

COME TO US AS STRANGER AND LEAVE US AS A FRIEND."

JENS FISCHER RODRIAN



EVERY DAY THE TEAM HAS REHEARSALS AND A SOUNDCHECK. EVERYTHING HAS TO BE ON POINT.

EVEN THOUGH THE TECHNICAL PART IS SET BY DAILY ROUTINE, THE PERFORMANCE ITSELF IS CHARACTERIZED BY **SPONTANEITY** AND **IMPROVISATION.**

WATCH THE COMPLETE INTERVIEW HERE.



PUNKT

PANORAMA

JENS IS SO KIND AS TO TAKE US BEHIND THE SCENES OF THE "BLUE MAN GROUP", WHERE WE GET A SHORT IMPRESSION OF THE PREPARATION OF THE SHOW.



4TH
STOP **A GLIMPSE** BEHIND
THE SCENES



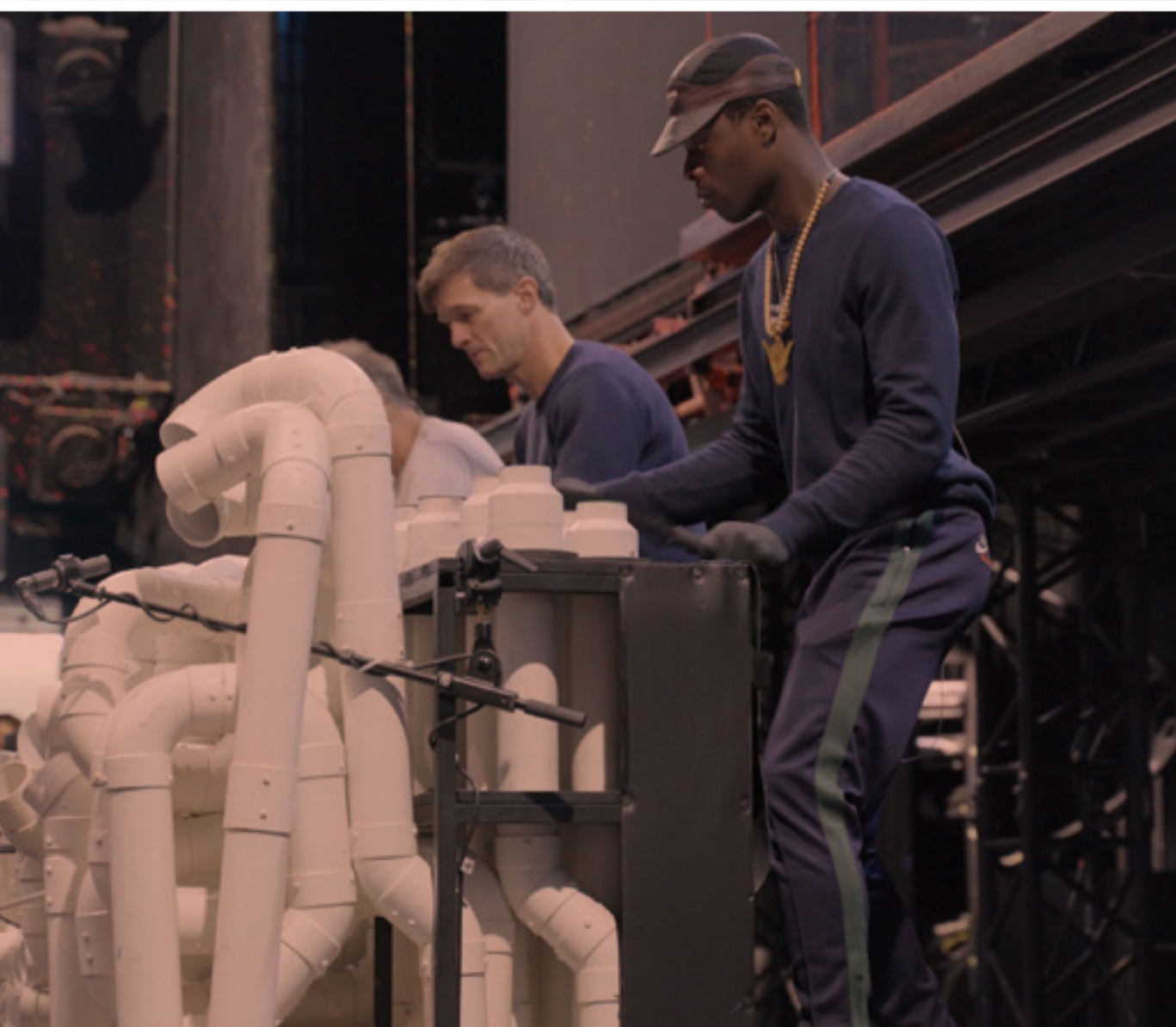


BESIDES THE GIANT ARTISTIC EFFORT

BEHIND ALL THIS, WE FEEL AN ENORMOUS WARMTH EVEN BEHIND THE SCENES.

EVERYTHING SEEMS FAMILIAR AND EVERYONE IS

INCREDIBLY FRIENDLY TO EACH OTHER AND US. THEREFORE, WE ARE EVEN MORE THRILLED ABOUT WHAT AWAITS US THIS EVENING.



**BACK
TO GRAND HYATT**





IT'S KIND OF SAD THAT WE RARELY GET TO SPENT MORE
TIME IN OUR HOTEL ROOM.

BUT THERE ARE SO MANY UNKNOWN THINGS TO EXPERIENCE. LIKE
THE BLUE MAN GROUP SHOW, WHICH WE, OF COURSE, WANT TO
DRESS WELL FOR.

LUCKILY, OUR ROOM OFFERS ENOUGH
SPACE AND PER-
FECT LIGHTING TO GET READY, PUT ON SOME MAKEUP AND TRY
ON DIFFERENT OUTFITS. PERFECT TO PREPARE OURSELVES FOR OUR
NEXT STOP: THE BLUE MAN GROUP SHOW.



5TH
STOP **THE GREAT SHOW**





THE BLUE MAN GROUP IS ENTERTAINING, LOUD, ABSURD AND, OF COURSE, ALWAYS BLUE.



B FOR BERLIN, B FOR BLUE MAN GROUP

THE BLUE MAN GROUP HAS CONTINUOUSLY BEEN ONE OF THE MOST SUCCESSFUL SHOWS IN BERLIN FOR FIFTEEN YEARS. TODAY, IT'S A PERMANENT ESTABLISHMENT OF THE CITY. THAT WAS DIFFERENT FIFTEEN YEARS AGO WHEN THE FUTURE OF THE SHOW WAS STILL UNCERTAIN.

"BACK THEN EVERYBODY CALLED US CRAZY. A SHOW WITH THREE BLUE MEN ON ONE STAGE", USCHI NEUSS, MANAGER OF STAGE ENTERTAINMENT GERMANY, RECALLS.

SHE CONTINUES: "IT DEFINITELY WASN'T RISK-FREE. UNTIL THE PREMIERE THE TICKET SALES WERE LOW. AND ALSO, A GERMAN MEDIA COMPANY SPONTANEOUSLY DECIDED TO THROW A BIG MOVIE PREMIERE PARTY ONLY 100 METERS AWAY. EVEN BRAD PITT AND THOMAS GOTTSCHALK WERE ON THEIR GUEST LIST. IT SEEMED THAT OUR PREMIERE WAS TO BECOME A DISASTER..."

BUT IT ALL CAME DIFFERENTLY. BRAD PITT LEFT THE CITY THE NEXT DAY, THE BLUE MAN GROUP STAYED FOR FIFTEEN YEARS AND BECAME AN IMPRESSIVE SUCCESS STORY OF BERLIN. THE SHOW WAS SO SURPRISINGLY UNCONVENTIONAL AND OUTSTANDING, THAT BERLIN DECIDED IT IS A PERFECT FIT FOR THIS CITY. AND THAT'S HOW THE BLUE MEN BECAME BERLINERS.

"WE WOULD'VE NEVER DREAMT THAT WE'D MANAGE TO INCLUDE THE BLUE MAN GROUP IN THE CULTURAL WORLD OF BERLIN IN THAT WAY AND TO PUT ON A SHOW OVER 6000 TIMES FOR PEOPLE FROM ALL OVER THE WORLD.", SAYS USCHI NEUSS.

SO, AFTER A BIG PREMIERE IN 2004, THEY MOVED INTO THEIR VERY OWN THEATER JUST THREE YEARS LATER. THE HOUSE WAS SPECIALLY REBUILT FOR THE SHOW AND NAMED:

**BLUEMAX THEATER AT
THE POTSDAMER PLATZ.**

**BLUE
MAN
GROUP
BERLIN**

**15
YEARS**



AN OUTLAY THAT WAS WORTH IT:

**FIVE MILLION PEOPLE HAVE ALREADY
SEEN THE SHOW IN GERMANY,
35 MILLION WORLDWIDE.**

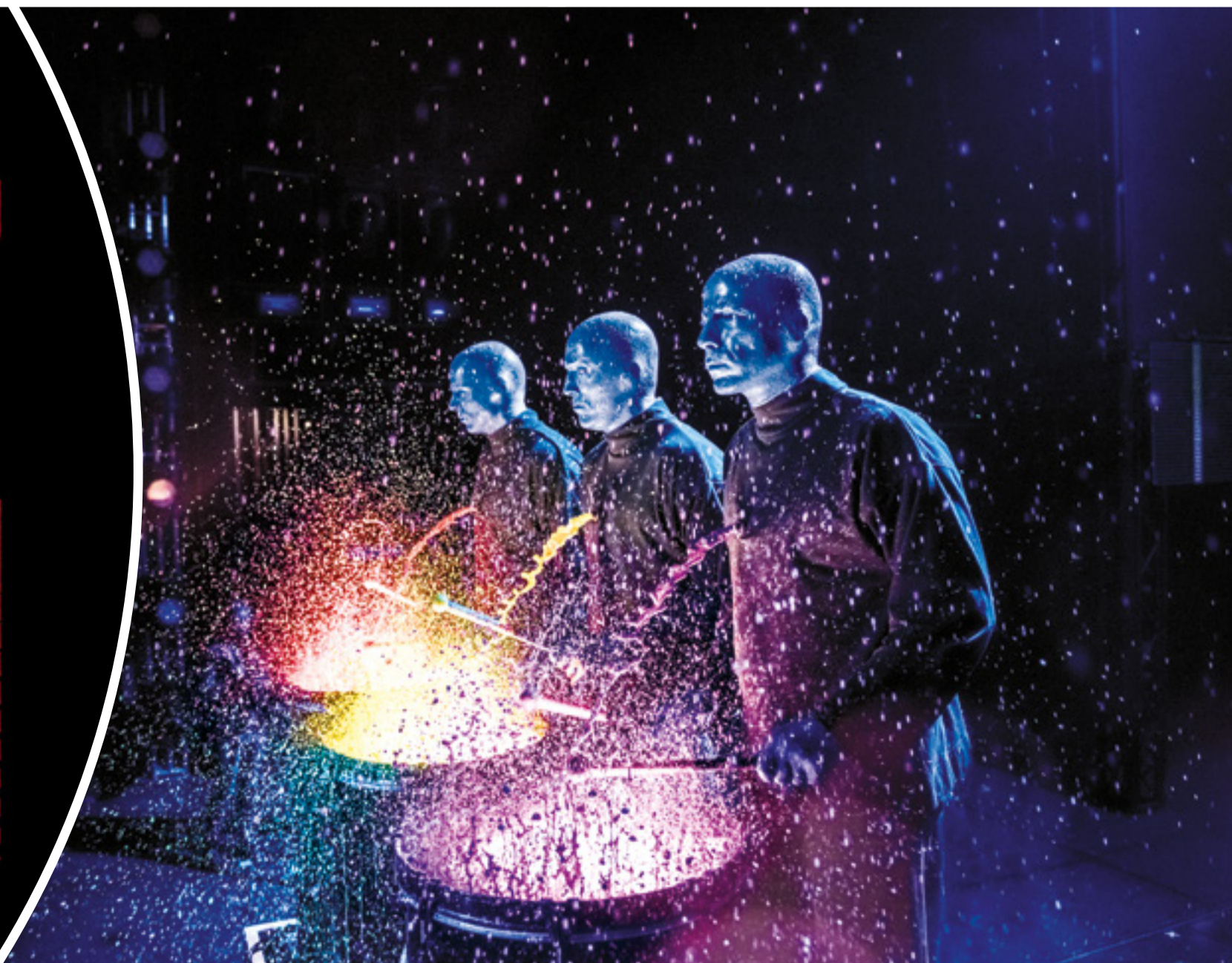


THE COLOR BLUE IS THE TRADEMARK FOR THE BLUE MAN GROUP. MORE THAN 18.000 KG OF MAKEUP IN TOTAL HELPED TO PRESENT A PERFECT SHOW DURING THE LAST 15 YEARS. 20.000 HEADPIECES WERE USED TO PROTECT HAIR AND EARS AND TENS OF THOUSANDS DRUMSTICKS WERE REPLACED OVER THE PAST YEARS.

THE SHOW WAS CREATED BY THREE YOUNG MEN IN NEW YORK IN THE LATE 1980S AS AN OFF-OFF-BROADWAY SHOW. NOW IT IS STILL SHOWN IN THEIR HOMETOWN AS WELL AS IN LAS VEGAS, ORLANDO, BOSTON AND CHICAGO. THE GROUP'S MUSIC HAS ALSO BEEN NOMINATED FOR A GRAMMY.

SINCE THE FORMATION, THE SHOW HAS CHANGED AND DEVELOPED. IT HAD TO BECAUSE THE BLUE MAN GROUP HOLDS UP A MIRROR TO THE WORLD AND THE WORLD CHANGES AS WELL, USCHI NEUSS.

IN THE FUTURE, THE COMMUNICATION BETWEEN THE BLUE MEN AND THE AUDIENCE GETS MORE INTENSE. 120 MINUTES SHOW MEANS A LOT OF ENERGY THAT FILLS US WITH REAL JOY. THE BLUE MAN GROUP IS AN ORIGINAL, WHICH IS WORTH SEEING.



THE BLUE MAN GROUP IS ALSO INVOLVED IN SOCIAL PROJECTS LIKE THE „WORLD CLEANUP DAYS“.

THE SHOW IS TRULY UNIQUE. RIGHT FROM THE START, THE AUDIENCE IS SET INTO THE RIGHT SPIRIT BY SHORT CLIPS AND WEIRD ANNOUNCEMENTS. FROM THE BEGINNING ON, YOU FORGET ABOUT THE REAL WORLD AND DIVE INTO AN UNCONVENTIONAL ONE. A WORLD THAT MAKES YOU LOSE ALL INHIBITIONS AND FORGET ALL CONVENTIONS UNTIL ALL THAT IS LEFT IS PURE FUN AND EMOTION. FOR A WHILE, WE BECOME KIDS AGAIN, PLAY AROUND WITH PERCEPTIONS AND ILLUSIONS, LED BY THE BLUE MEN, WHO RUN THROUGH THE SEAT ROWS, SOMETIMES PICKING SOMEONE UP TO JOIN THEM ON STAGE. WE MUST NOT AND DO NOT WANT TO SHOW THESE SCENES. NOW IT IS ON YOU TO FIND OUT AND LET YOURSELF BE ENCHANTED.



**THE GREAT SHOW BAND
& THE VALEUR GUIDES**



6TH
STOP **VOX RESTAURANT**

AFTER DANCING AND LAUGHING AT THE SHOW, WE ARE COMPLETELY EXHAUSTED AND VERY HUNGRY. IT'S LATE. JUST BEFORE ELEVEN. ONE OF THE MANY REASONS WHY WE CHOSE THE GRAND HYATT WILL CLOSE SOON. BUT WE HOPE, THE TEAM MAKES AN EXCEPTION FOR US. THE TEAM OF THE:

VOX RESTAURANT.



THE VOX RESTAURANT'S

REPUTATION IS CHARACTERIZED BY A UNIQUE ATMOSPHERE AND EXTRAORDINARY CUISINE. WE WONDER IF WE WILL BE SERVED SOMETHING TO EAT THIS LATE.





LUCKILY, THE RESTAURANT LIVES UP TO ITS REPUTATION AND EVEN ALLOWS US TO COME IN SHORTLY BEFORE THE OFFICIAL CLOSING TIME. THE WHOLE TEAM DEDICATES PERSONAL TIME TO US AND LETS US EXPERIENCE THEIR CONCEPT OF "POSITIVE DINING" - BEGINNING WITH THE KITCHEN, WHICH ISN'T HIDDEN BEHIND WALLS. IT'S COMPLETELY OPEN AND A PART OF THE RESTAURANT; SO PART OF THE DINING EXPERIENCE IS SEEING THE CHEFS LIVE AT WORK.

A HIGHLIGHT OF THIS UNIQUE CONCEPT IS THE CENTURIES-OLD ASIAN COOKING TRADITION, WHERE DAILY MEALS ARE APPRECIATED TOGETHER IN A GROUP AND ARE ESSENTIAL FOR THE WELL-BEING OF THE BODY AND MIND.





**THE USE OF CAREFULLY SELECTED
INGREDIENTS,** AS WELL AS THE PROPER METHODS OF
PREPARATION, CONTRIBUTE TO THIS.
GREAT ATTENTION IS ALWAYS GIVEN TO REGIONALITY AND SEASONALITY.

IN FRONT OF THE
SHOWKITCHEN,
EMILIE AND BELINDA
ENJOY THE VOX RESTAURANT'S ATMOSPHERE.



WE ARE LUCKY TO HAVE A MAN JOIN US,
WHO CAN TELL US EVERYTHING ABOUT THE
VOX RESTAURANT: **HOLGER JOST**





HOLGER SHOWS
EMILIE AND BELINDA
ORIGINAL WASABI.



HOLGER JOST IS THE HEAD CHEF OF THE VOX RESTAURANT. HE IS ALWAYS ON THE MOVE AND AIMS TO FIND LOCAL PARTNERS WHO MEET THE RESTAURANT'S HIGH STANDARDS, TO HELP PROVIDE A WONDERFUL CULINARY EXPERIENCE FOR THE GUESTS. AND ALL OF THAT IN AN ENVIRONMENTALLY FRIENDLY WAY.

HOLGER IS NOT A CONVENTIONAL CHEF. HE WORKS WITH THE HEART AND SOUL. THE ASIAN INFLUENCE IN THE MENU COME FROM HIM, SINCE HE USED TO LIVE IN SRI LANKA FOR MANY YEARS.

HIS AUTHENTICITY AND DOWN-TO-EARTHNESS ARE VERY APPEALING. DURING OUR CONVERSATION, HE TELLS US ABOUT THE MOVING MOMENTS OF HIS STAY IN ASIA.

"HAVING SEEN SO MUCH SUFFERING AND MISERY, IT IS NOT THAT IMPORTANT TO YOU, EVEN AS THE HEAD CHEF OF A LUXURY KITCHEN, WHETHER THE SPOON IS ON THE TABLE IS PUT ONE WAY OR ANOTHER. THERE ARE MORE IMPORTANT THINGS." HOLGER JOST





**COCONUT
LEMONGRASS SOUP**

SCALLOP, WAN TAN, SOYBEAN
SPROUTS & CILANTRO

**"YOU NEED TO TREAT EVERYTHING
WITH RESPECT - THE ANIMALS AS
WELL."** HOLGER JOST



BELINDA ENJOYS THE SPECIALITY OF THE VOX RESTAURANT SUSHI PLATE "TAKE"

6 NIGIRI – EBI, HOTATEGAI, MAGURO, SHAKE, SHIROMI
4 PIECES OF AVOCADO PHILADELPHIA ROLL
4 PIECES OF SPICY TUNA ROLL
6 SASHIMI – MAGURO, SHAKE



THE STATEMENTS

BEFORE ARE EXACTLY WHAT MAKES HOLGER AND THEREFORE THE VOX RESTAURANT SO LIKABLE. THE STANDARDS HERE ARE VERY SOPHISTICATED BUT IN A HUMBLE KIND OF WAY. WATCH

THE FULL INTERVIEW HERE.

NOT ONLY TO FIND OUT EVERYTHING ABOUT THE VOX RESTAURANT, BUT ALSO ABOUT ITS EXTREMELY PHILANTHROPIC CHEF.

A TRUE MUST-ORDER

AT THE VOX RESTAURANT IS THE AUTHENTIC SUSHI, WHICH IS PREPARED IN THE SIGHT OF THE GUESTS.



IN THE SUMMERTIME,

THE RESTAURANT'S GORGEOUS TERRACE IS A HOTSPOT OF THE POTSDAMER PLATZ. DARK ROSEWOOD FURNITURE AND WHITE SAILCLOTH, LOW WOODEN TABLES AND TWO OUTDOOR BARS LET YOU EXPERIENCE THE PERFECT HOLIDAY FEELING AND ESCAPE THE BUSY URBAN WORLD. UNDER THE OLD LINDEN TREES, IT IS THE IDEAL PLACE FOR PLEASANT SUMMER EVENINGS OR A LONG SUNDAY BREAKFAST. IN THE EVENINGS, IT IS A POPULAR VENUE FOR APERITIFS, AFTER-WORK DINNER OR DRINKS.

7TH
STOP **VOX BAR**





WHETHER IN SPRING, SUMMER, AUTUMN OR WINTER –
RIGHT BESIDE THE VOX RESTAURANT, THE PLACE TO GO
FOR THE BEST DRINKS IS **THE VOX BAR.**

CERTAINLY, THE MOST EXCLUSIVE DRINK, WHICH IS ONLY
AVAILABLE HERE, IS **THE VOX WHISKY.**

THE SPECIAL THING ABOUT THIS WHISKY IS
NOT ONLY ITS TASTE -
WHICH IS INCREDIBLE. IT IS DISTILLED VERY CLOSE TO BERLIN, IN THE
SPREEWALD. A GERMAN WHISKY FROM BRANDENBURG
WITH A UNIQUE TASTE. OF COURSE, THIS
SPECIAL SPIRIT IS STRONGLY LIMITED. LIKE EVERYTHING IN THIS HOUSE,
IT IS NOT A MASS PRODUCT.
ANYWAY, IT IS WORTH TRYING IT.



WITH OVER 300 DIFFERENT SPIRITS,

THE VOX BAR OFFERS ONE OF THE GREATEST COLLECTIONS IN BERLIN, FOCUSED ON THE FINEST WHISKIES IN OVER 150 DIFFERENT VARIETIES. BESIDES THEIR UNIQUE HOUSE CREATION AND THE WELL-KNOWN CLASSICS, THERE ARE ALSO PRECIOUS RARITIES SUCH AS A 30-YEAR-OLD BALLANTINE'S AND A 26-YEAR-OLD BOWMORE, MATURED IN FRENCH BARRIQUE WOOD.

THE BAR CHEF

ALSO BROUGHT SOME EXOTIC AND LIMITED BOTTLES FROM HIS TRAVELS. MOST OF THEM ARE NOT DISTRIBUTED IN GERMANY: SUCH AS THE IRISH "METHOD AND MADNESS" OUT OF VIRGIN HUNGARIAN OAK.



SPECIAL HIGHLIGHTS

FOR EXPERTS ARE THE NOBLE SPIRIT FLIGHTS, WHICH CAN BE ENJOYED WITH HARMONIOUS CHOCOLATE.

IN ORDER TO CREATE AN EVEN MORE PERSONAL EXPERIENCE, EACH BARTENDER CREATES THEIR OWN SIGNATURE COCKTAIL.



WE ARE LUCKY TO BE SPOILED BY
BARTENDERS IN TOWN: **RANDY.** ONE OF THE BEST

**FULL OF CHARM AND
WIT,** HE PREPARES THE DRINKS FOR US, WHICH
SO FAR. IN THE LOUNGE OF THE VOX BAR WE CHILL OUT
AND AFTER A FEW MOMENTS WE START TO FEEL LIKE WE
ARE IN HEAVEN. BELONG TO THE BEST THAT WE HAVE TESTET

THERE IS MORE TO THE EVENING THAN BEING CUSTOMERS
WHO GET SERVED: WE BUILD A REAL CONNECTION AND
**EXCHANGE IDEAS AND
MEMORIES.**





THE ENTIRE EXPERIENCE, FROM THE
FOOD OVER THE DRINKS TO THE PERSONAL CONNECTION, IS A UNIQUE EMOTIONAL MEMORY.
ANOTHER PERK IS THE SMOKER'S LOUNGE,

WHICH INVITES YOU TO ENJOY HIGH-QUALITY CIGARS IN A PLEASANT ATMOSPHERE. DEPENDING ON AVAILABILITY, CUBAN CIGARS FROM TOP BRANDS ARE ALSO OFFERED.



**THE BEAUTIFUL
LOUNGE OF THE
VOX BAR**



**EMILIE, RANDY,
HOLGER AND BELINDA**



8TH
STOP **OLYMPUS SPA**



THE ROOM PRICE INCLUDES

ARE MINERAL WATER, ONLINE-NEWSPAPERS, MAGAZINES AS WELL AS THE USE OF

CLUB OLYMPUS SPA & FITNESS.



AFTER A DELICIOUS DINNER AND SOME FINE DRINKS,

WE FINISH THIS LONG AND INSPIRING DAY IN THE
OLYMPIC SPA BEFORE WE
WILL GO TO BED.





THE SPA IS LOCATED ON THE 8TH FLOOR OF THE HOTEL AND OFFERS A MAGNIFICENT VIEW OVER THE ROOFTOPS OF BERLIN IN THE **NIGHT SKY.**



**IF THE WEATHER IS FINE,
THE TERRACE**

OF THE CLUB OLYMPUS IS THE RIGHT PLACE TO RELAX. ESPECIALLY IN THE EARLY MORNING OR LATE AFTERNOON, IT OFFERS A GREAT VIEW OVER THE CITY INCLUDING A BEAUTIFUL

SUNRISE OR SUNSET.





A HOT TUB, A SAUNA,

AND A RELAXATION AREA WELCOME US, JUST LIKE A
GIANT POOL. WHETHER TO EXERCISE
OR TO RELAX, IT IS A
GREAT PLACE TO FINISH OFF THE DAY.





WWW.HYATT.COM

THE
FINAL **NIGHTCAP**





AN INCREDIBLY EXCITING FIRST DAY COMES TO AN END, AND NOW OUR **COZY KING SIZE BED** IS WAITING FOR US. HOWEVER, AS IT'S WELL KNOWN THAT BERLIN'S DAYS AND NIGHTS ARE LONG.

THUS, BEFORE WE FALL ASLEEP, MAX GERWECK SURPRISES US **WITH A NIGHTCAP.** THE MEMBER OF THE VERY HOSPITABLE GRAND HYATT TEAM SERVES US A **DELICIOUS CHAMPAGNE.**

IT TASTES AMAZING AND INSPIRES US TO **RECAPITULATE THE DAY.**



WE HAVE LEARNED A LOT

OF NEW THINGS, AND WE EXPERIENCED MANY FUNNY AND SOME SERIOUS, THOUGHTFUL MOMENTS. MOST IMPORTANTLY, WE MET VERY INSPIRING AND CHARMING PEOPLE, WHO GAVE US THE FEELING THAT WE ARE NOT ONLY WELCOME HERE IN BERLIN, BUT - IN SOME WAY - AT HOME.

TOMORROW WILL BE AGAIN AN EXCITING DAY. BUT FOR NOW IT'S TIME TO SLEEP. STAY TUNED AND FOLLOW US ON **DAY 2** OF OUR DISCOVERY THROUGH BERLIN.

